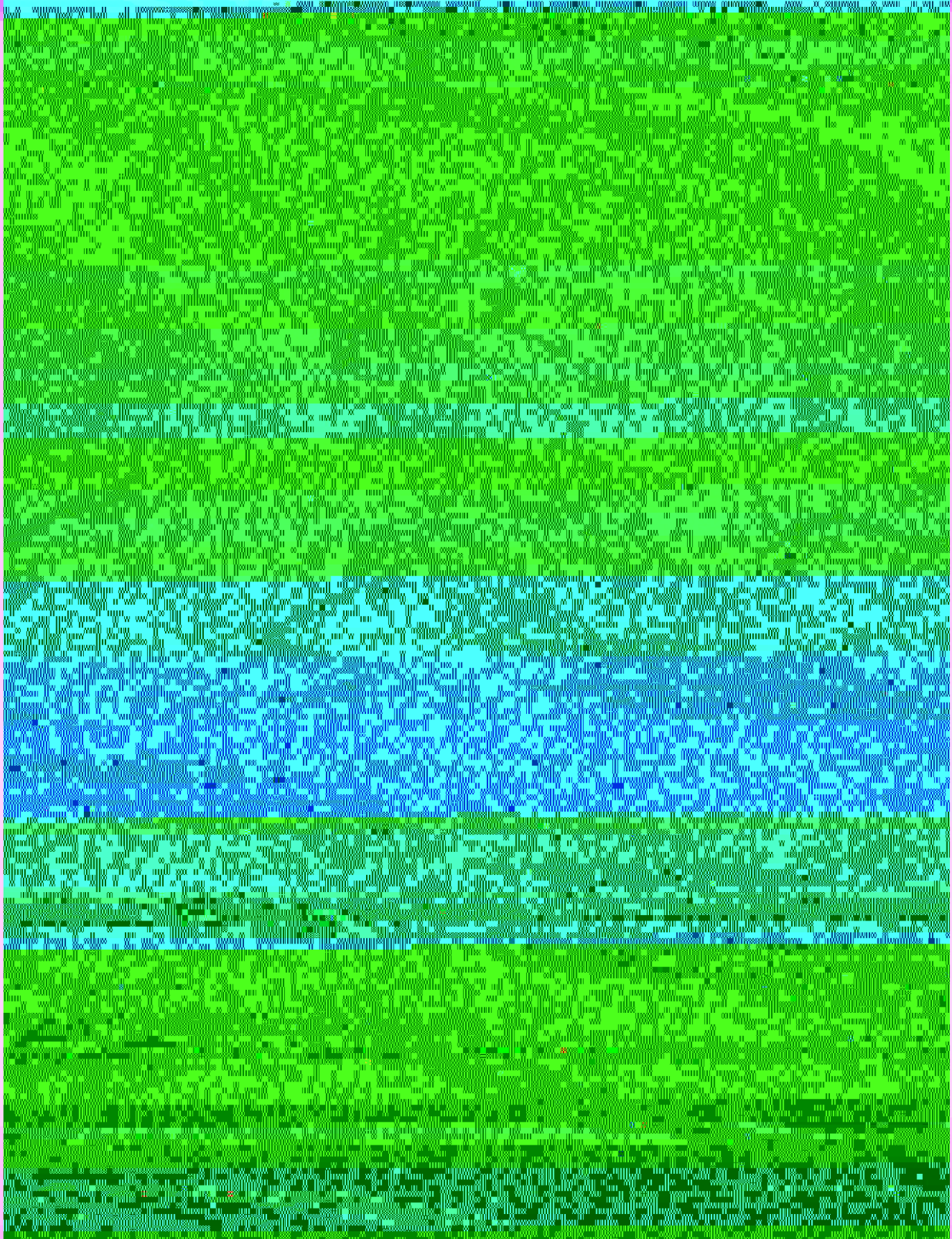




11





THE SCHOOL OF PERFORMING ARTS
PRESENTS



PETER AND THE STARCATCHER

DIRECTOR/CHOREOGRAPHER
Sheldon Mba

MUSIC DIRECTOR
Linda Starkey

PRODUCTION COORDINATOR
Melissa Penkava Koza

STAGE MANAGER
Jesse Stephenson

ASSISTANT STAGE MANAGER
Abby Epstein

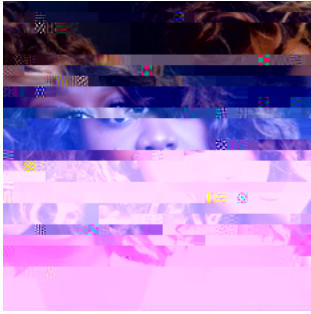
SCENIC DESIGNER
Robin Vest

ASSISTANT SCENIC DESIGNER
Damien Page

COSTUME DESIGNER
Jade Almsberger

HAIR AND MAKEUP
DESIGNER
Sarah Bussard

ASSISTANT HAIR AND
MAKEUP DESIGNER
Bri



Brittani Richardson (A666 a Ma 8 Ma D 6) 6 a d b W c a

PROLOGUE

COMPANY

THE NEVERLAND - ON DECK

PETER/BOY, PRENTISS, ASTER, MOLLY, BUMBRAKE,
BILL SLANK, ALF, GREGGORS, & ENSEMBLE

MOLLY S CABIN

MOLLY, BUMBRAKE, BILL SLANK, ALF, & MACK

CAST

PRODUCTION STAFF

BIOGRAPHIES



Jonathan Banks

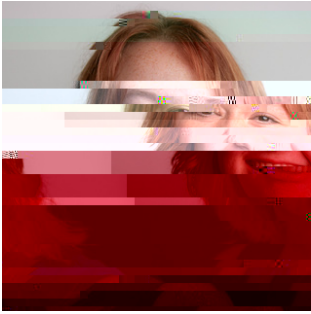
B

BIOGRAPHIES



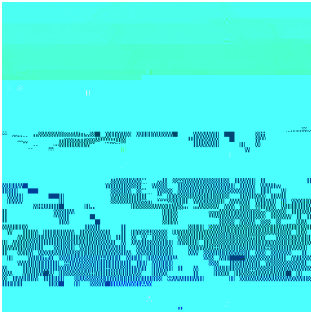
A (Bill Slank/Fighting Prawn) is returning for her fifth and final show at Wichita State University. Previous Credits include (Wichita State University), Comper (Wichita State University), and (Wichita State University). Ashley is pursuing a Bachelor of Fine Arts in Theatre Performance with a double minor in and Honors Leadership. She is also a member of the sorority Delta Gamma in leadership positions. She is currently applying for graduate school in hopes of earning her MFA in Theatre Performance. Ashley's mission as an artist is to "thrive off my imagination and show how important it is for someone to never lose theirs. If the story

BIOGRAPHIES



CONTINUED TO NEXT PA

BIOGRAPHIES



Lucy (Black Stache, Assistant Hair & Makeup Designer) is so YARRRG to close out their senior year at Wichita State University. You may have seen them onstage at WSU as Happy in , Nell in , and Jaquenetta in . They have also recently gotten in the film acting scene with several student films including (Dir. Piper Prichard), (Dir. Ashlynn Farney), the film in WSU's Season: (Dir. Bret Jones). You can catch them this summer at Music Theatre Wichita as a Hair & Makeup Artisan. Their tech and design credits include Stage Manager of (WSU) and (Empty Space), Costume Build/ as a/s

BIOGRAPHIES



Jesse Stephenson (Stage Manager) is beyond honored to be working on WSU's production of *Peter and the Starcatcher*. He has also been a part of Wichita State University's productions of *Pippin* and *A Chorus Line*, serving as Assistant Stage Manager on both shows. Jesse is a sophomore studying for his BFA in Design and Technical Theatre and a Stage Manager Certificate. You can see more of Jesse's work on his website <https://jsteph13.wixsite.com/jstephensontechnical>.

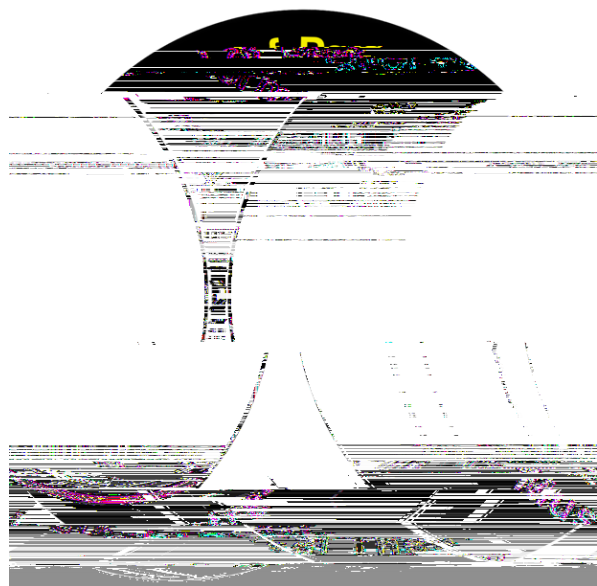


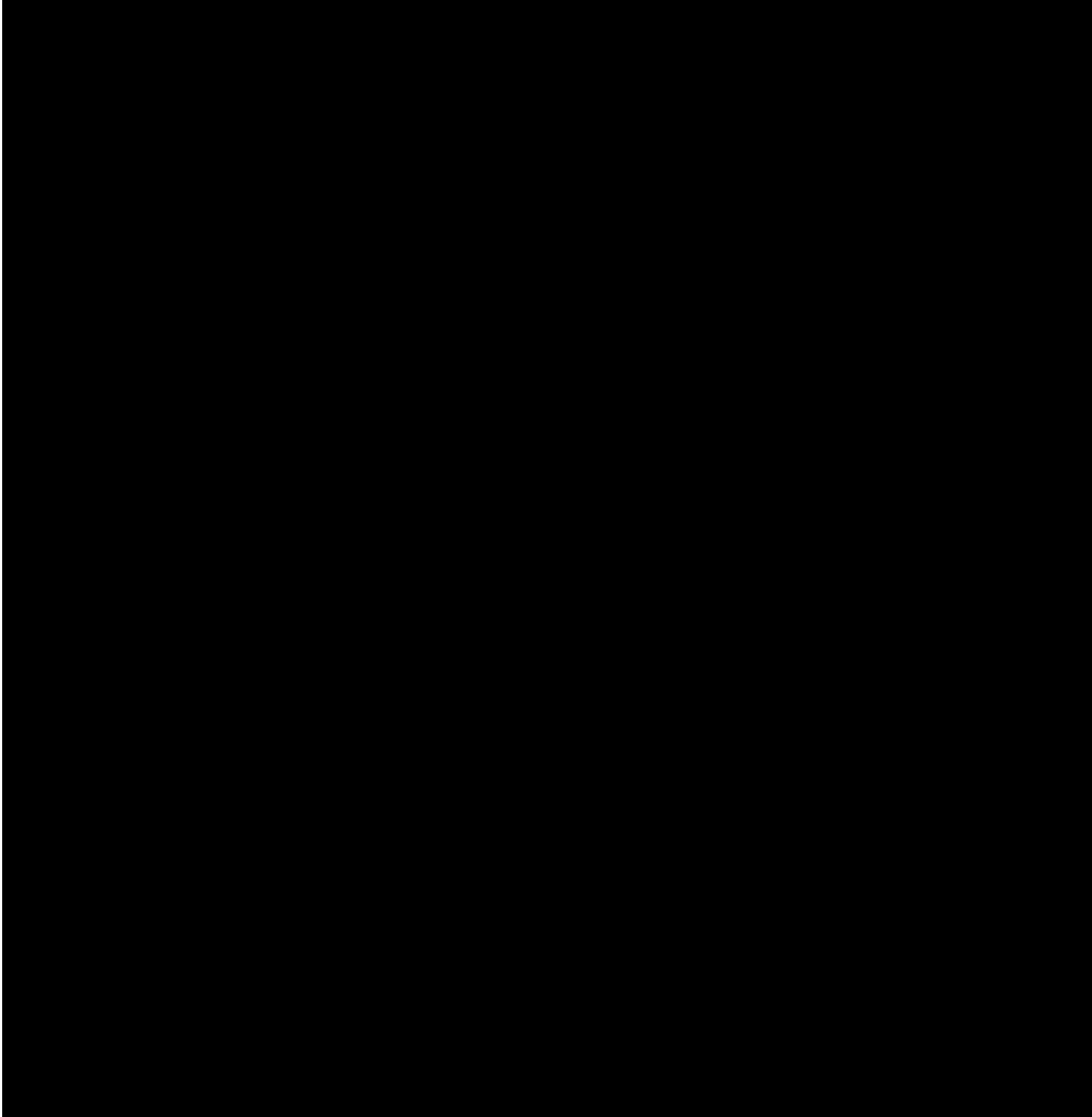
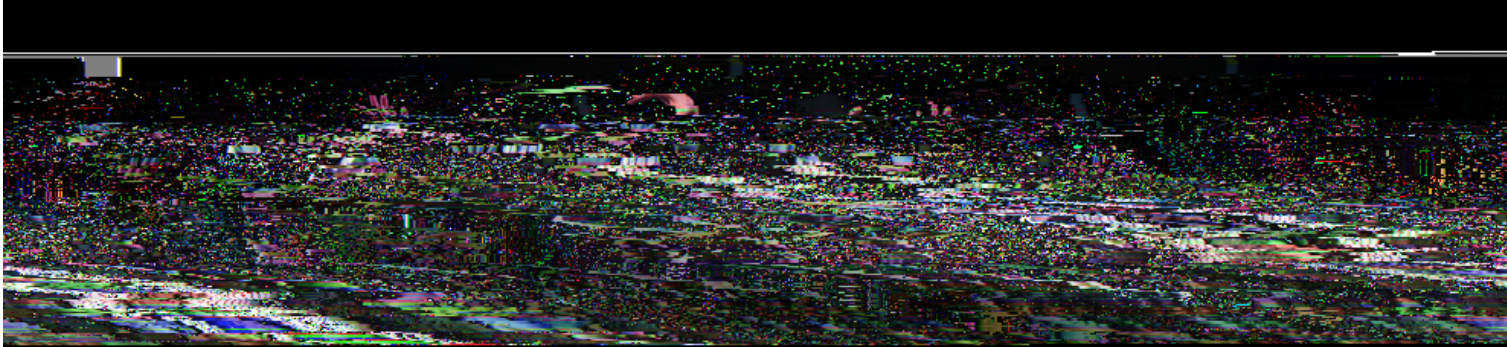
Gavin Tanner (Peter/Boy) is over the moon to be a part of this production of *Peter and the Starcatcher*. His previous credits include *Ride the Cyclone* (ROXY'S), *A Chorus Line* (Wichita State University), and *Pippin* (WSU). Gavin is a senior pursuing his Bachelor of Fine Arts in Music Theatre, and he is the president of the Wichita State Music Theatre Company (WSMTC). Gavin would like to thank his family, friends, God, and Peyton for supporting him through this process. His mission as an artist is to educate, challenge, and inspire.



Denise Ussery (Co-Sound Designer) is thrilled to be working on Wichita State University's production of *Peter and the Starcatcher*. Previous credits include Carpentry Apprentice for the Colorado Shakespeare Festival, sound designer for WSU's *Mama Bushwick is Dead*, sound designer for *1984*, and sound designer for *1984*.







Vertical text on the right side of the page, likely a page number or title, though the characters are illegible due to the image quality.



The

Kennedy Center

www.kennedy-center.org



Our mission is to provide the highest quality of education, research, and performance.

www.kennedy-center.org

