

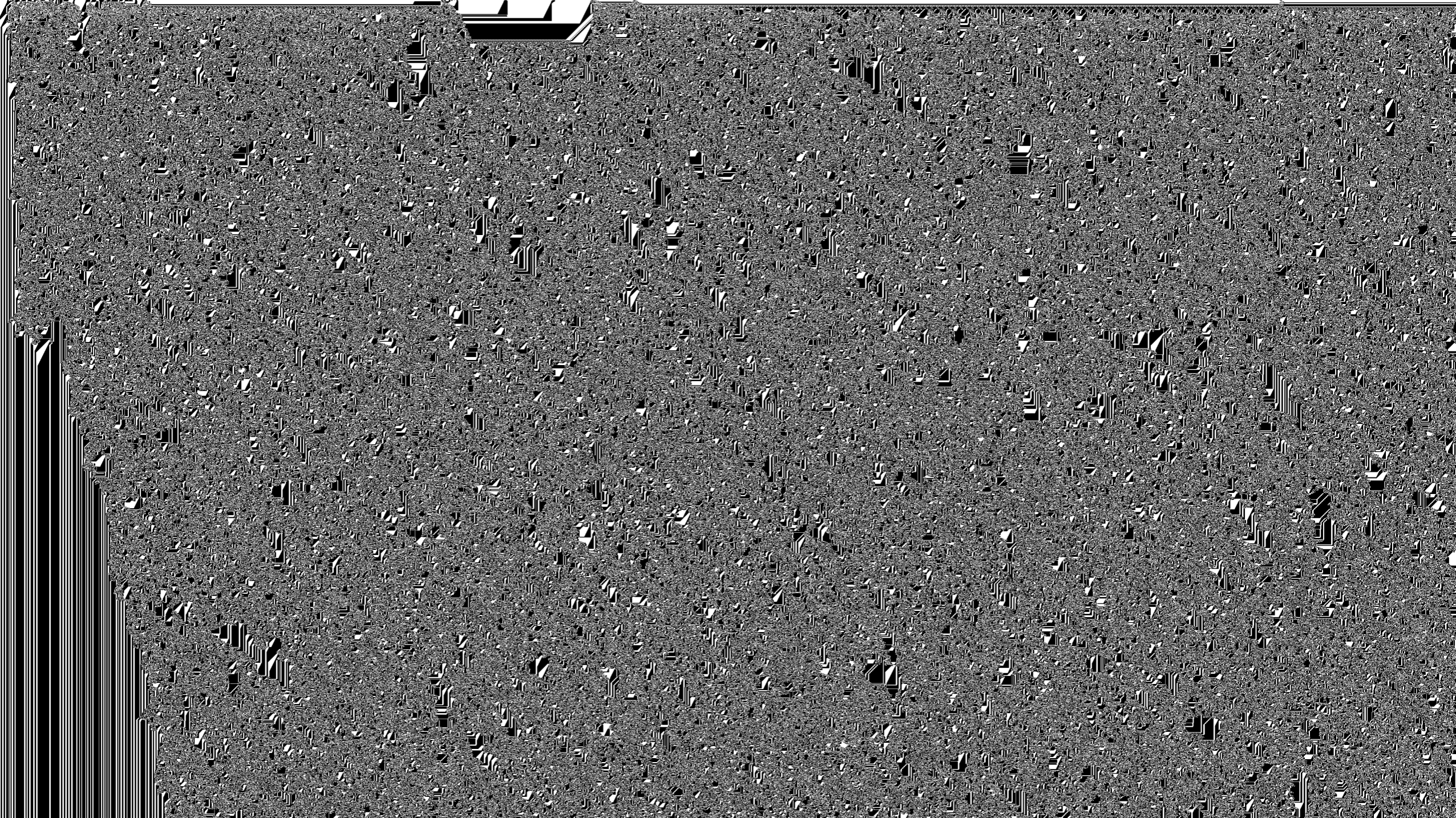
and course. In addition, any high school assessment of student learning outcomes that is part of a concurrent enrollment course will be requested from the school and compared with our own assessments.

The prerequisites for university College Algebra classes are two years of high school algebra or

Summer 2007 Percentages with WSU Math 111 Grades

Final Grade Distribution

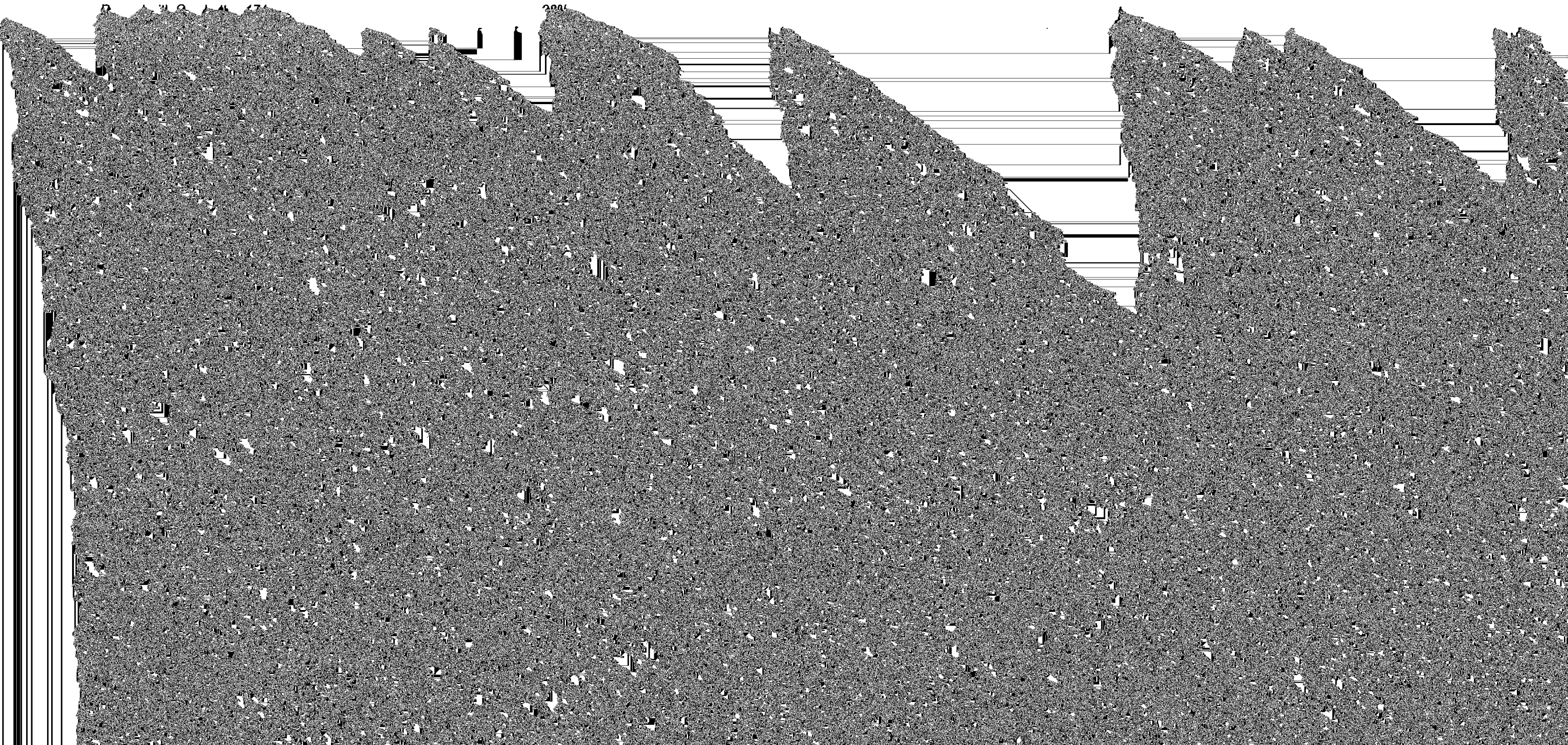
# of Students	Grade A	Grade B	Grade C	Grade D	Grade F	Drp / Wd	INC	Audit
87	24	19	18	7	10	9	0	0



Spring 2008 Concurrent Math 111

Final Grade Distribution

# of Students	Grade A	Grade B	Grade C	Grade D	Grade F	Drp / Wd	INC
181	74	75	25	2	0	5	0



Fall 2007 Concurrent Math 111

Final Grade Distribution

# of Students	Grade A	Grade B	Grade C	Grade D	Grade F	Drp / Wd	INC
33	10	21	2	0	0	0	0

Passed with C or better: 33

= 100%

Spring 2007 Concurrent Math 111

Final Grade Distribution

# of Students	Grade A	Grade B	Grade C	Grade D	Grade F	Drp / Wd	INC
167	68	77	20	0	0	2	0

Passed with C or better: 165

= 99%

Current Qualifying ACT Score

101 = 60%

Current Qualifying ACT Score / Passed 111

99 = 98%

ACT Score / Passed 111

33 = 100%

