

COLLEGE OF APPLIED STUDIES

# ANNUAL REPORT

2018

WEBSITE

[WCHITA.EDU/CAS](http://WCHITA.EDU/CAS)

FOLLOW US

[@WCHITASTATECAS](https://twitter.com/WCHITASTATECAS)

# TABLE OF CONTENTS

## ABOUT THE COLLEGE

.JTTJPO  
 \$PSF 7BMVFT  
 %FQBSUNFOUT  
 -FBEFSTIJQ 5FBN  
 .FTTBHF GSPN UIF %FBO  
 \$PMMFHF 3FCSBOE  
 4DIPPM PG &EVDBUJPO 3FOBNF

## NEW INITIATIVES

8PSLGPSDF -FBEFSTIJQ %FHSF#XBSET  
 5FBDIFS "QQSFOUJDF 1SPHSBN  
 \$PSCJO \$POOFDU  
 5IF 'VTF  
 4UVEFOU "NCBTTBEPST  
 4QFDJBM &WFOUT  
 :PVUI \$BNQT

## GLOBAL LEARNING

5FBDI JO 1BSBHVBZ  
 4UVEZ "CSPBE JO (MPCBM 4QPSU \*OEV TUSZ

## STUDENT SUPPORT

%JWFSTJUZ \$PNNJUUFF  
 4DIPMBSTIJQT  
 3FUFOUJPO 'FMMPXT

## RESEARCH & FUNDING

(SBOUT  
 (SBEVBUF 4IPXDBTF

## FACULTY & STAFF

/FX 'BDFT

## ADVISORY BOARD

## STAY CONNECTED



# ABOUT THE COLLEGE

. \* 4 4 \* 0 /

5IF NJTTJPO PG UIF \$PMMFHF PG "QQMJFE 4UVEJFT JT UP QSF  
CFOFGJU TPDJFUZ BOE JUT JOTUJUVUJJPOT UISPVHI UIF VOEFS  
UIF MFB SOJOH QSPDFTT BOE UIF BQJNDJQBMUJJPOT PG LOPXMFEH

## CORE VALUES

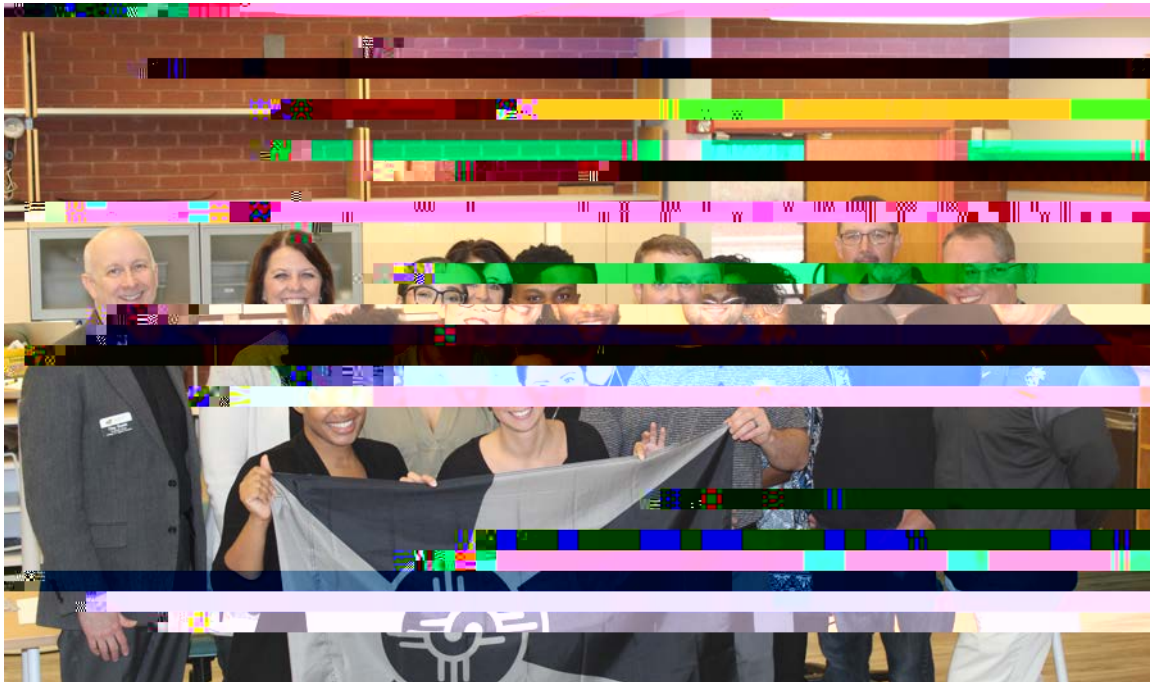
- % \* 7 & 3 4 \* 5 :**  
8 F W B M O D M V T J P O B C E V W B S J H O U D S F B Q S P E V D O E W F  
S F T Q F D U G V M G F S W M S P O N F O U
- \* / 5 & ( 3 \* 5 :**  
8 F B S H V J E C F Z S V I P O F B S O E S B O T Q B S M O D Z S J E D U J P O T
- \$ 0 - - " # 0 3 " 5 \* 0 /**  
8 F D S F B D V M U V S O H B H B N O F O R U M M B C P S B R U S P O M M J W I F J O  
D P N N V B J E Z X P S M E
- % \* 4 \$ 0 7 & 3 :**  
8 F F N C S B D Q S P N J P O U F F M D F S U B T B M Q Z S P D P F T F T U J P O J O H  
U F T U B I O S E F G J O N G H F F O R F V X S P S M T J G F M F B S H O F S T
- & " % & 3 4 ) \* 1**  
8 F C V J M F E B E F S T F N Q P X F S J E G U M P U F C P T F O B M N F W Q Z J U Z

## DEPARTMENTS

5 I F \$ P M N P G R Q M A J U F E E R G G C S F H S B N U Q B X O J O Q E W B A J O H D B S O J O H B D S F  
U I M J G F T C F H C S P H S B N T Q S F Q B S D S S C U E S M B G S B M F S M Z D I J M E I P P E  
F E V D B U R Y P D S Q J Z T F J P M P H U Z E H V Q M P U Q V M B U J P O T

\$ 0 6 / 4 & - * / (	) 6 . " /	4 \$ ) 0 0 - 0 '	4 1 0 3 5
& % 6 \$ " 5 * 0 / " -	1 & 3 ' 0 3 . " / \$ &	& % 6 \$ " 5 * 0 /	." / " ( & . & / 5
- & " % & 3 4 ) * 1	4 5 6 % * & 4		
& % 6 \$ " 5 * 0 / " - " / %			
4 \$ ) 0 0 -			
1 4 : \$ ) 0 - 0 ( :			

## FACULTY & STAFF



\* G V O F X F D I B P N S B N G S R N F \$ P M G F H F V D R U B P O  
\$ P M N P G Q Q M A J U F E E J 5 T S P V H J B V U I J U U I B B M F H S P X O  
B O E I B O W I P E N F F D I B M M P Q S F Q B S J P G F T G F B O B M \$ F B D R I O Q E M O Z Y T Q F D J B  
X P S M B J E F B O J S M F G Z F V F F S P M M F B G S P B E N U B O D P M O P R O M Z Q S F F Q B S E U J P  
U F B D B F O S E E V D B U J P O E M B M D P E O S T F M P S B U J P O B M Q U Z N O F S M D O S E U T  
Q S P G F T J O P O C B S U B H F B O E V F S D D J F O D F

% F B O - F G F W F S B E E F E 5 I F O F X O B N F P G U I F D P M M F H F X J M M F C  
B O E P Q Q P S U V O J U J F T X F P G G F S T U V E F O U T B O E J O E V T U S Z Q B S U  
M F B S O J O H X I F S F F Y Q F S J F O D F J T F W F S Z U I J O H

8 0 3 , ' 0 3 \$ && & % 4

8 0 3 , ' 0 3 \$ & - & " % & 3 4 ) \* 1 % & ( 3 & &

5 & " \$ ) & 3 " 1 1 3 & / 5 \* \$ & 1 3 0

4 J O D U M B V O O V N N F S U I F 5 F B ' D I Q S F O S P D I S B N 5 "  
I B T U B L F G B O J E D P X I F M B S O M T O P H S B N 6 5 I F P O M  
C B D I F M B B H T S B N Q S \$ E V D B W I F S F Q Q P S D P N Q M Z F U J F S



\$ 0 3 # \* / \$ 0 // & \$ 5

\$ 0 . . 6 / \* 5 : 0 6 5 3 & " \$ )



5 ) & ' 6 4 &

5 I F V T B O F Y U F O P T G P F O \$ P M O F H F  
" Q Q M J F E B O E S I F O W P E C C Z # F  
Q S P N P U F T D P X M U W B J O P S E B R U M M O  
6 O J W F B S O T B U 8 Z J D I J U B D P N N V O J

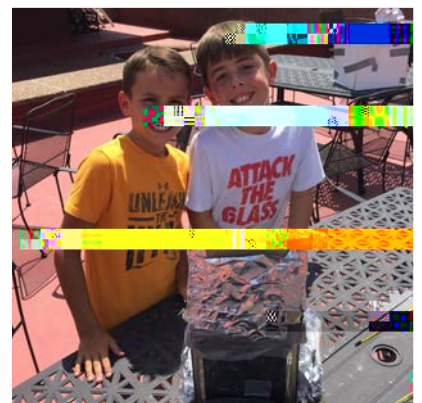
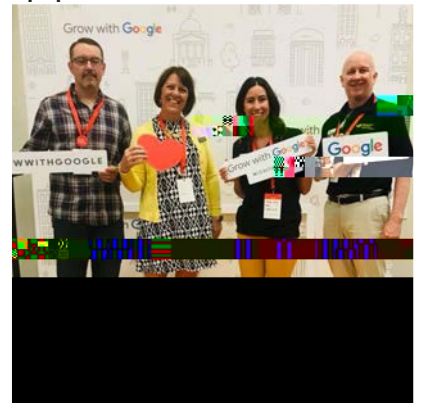
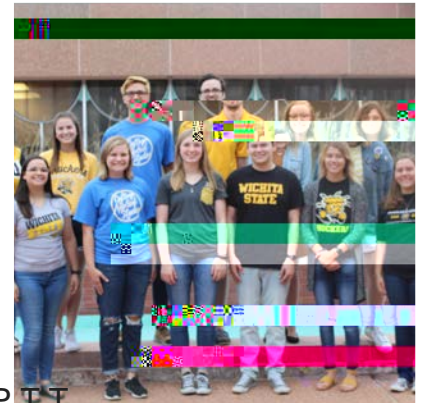
- 8 J D I J U B C B X B S E . # P Z T ( J S M T  
# P V O E • 8 J D I J U B 8 F T U
- , B O T ' P T E B O L 4 D I P P M
- 8 J D I J U B B E J C B S 8 J D I J U B ( F B S  
) V N B O J U Z • 4 J N Q M Z B - B E

4 5 6 % & / 5 " . # " 4 4 " % 0 3 4

5 I F \$ " 4 4 U V E F O U " N C B S T F B E P S T  
T U V E W O M I V O U F T V S Q T Q U R I S P U  
D P M M F H F P V L S P S B F D I S V J B O E O U

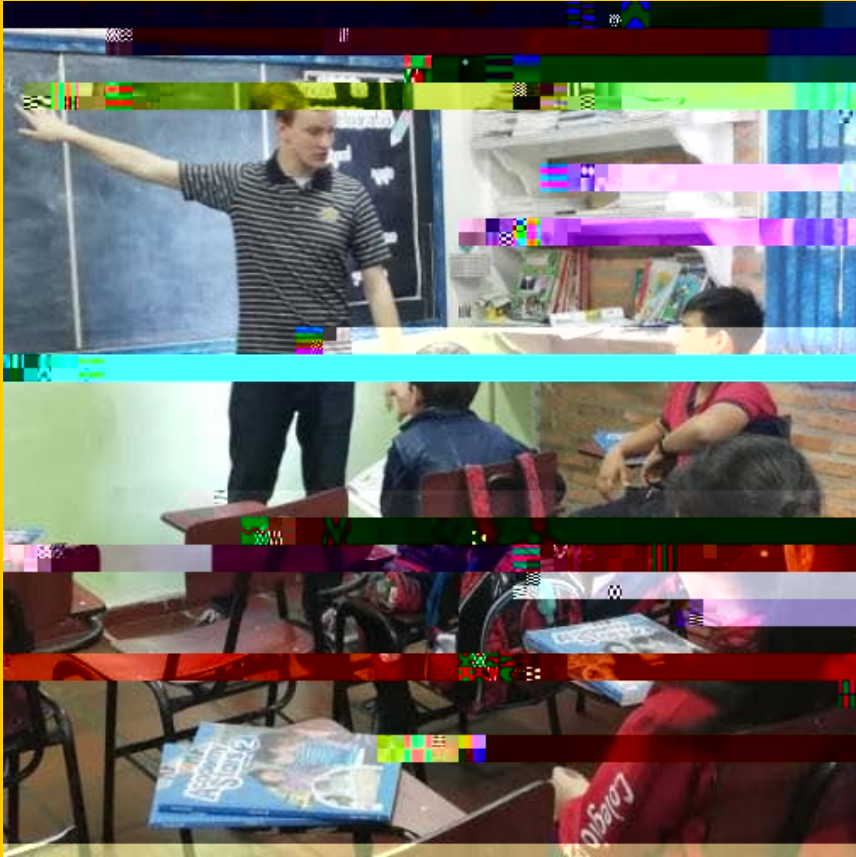
B P B ; S F U F O F G J P P O S U T

5 I F B N C B T T O E P I S S T B W O T F D P Z O F B S O I B T  
B N C B T T S B E O P H S T O F N S F T I N F O O J P O S B K P S T B D S P T T  
U I O P M M F H F



: 0 6 5 ) \$ " . 1 4

( - 0 # " - - & " 3 / \* / (

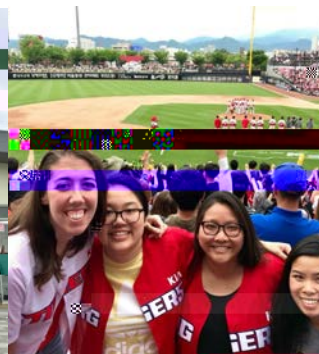


5 & " \$ ) \* / 1 " 3 " ( 6

4B#FMTBO 4FDPOEBSZ )JT  
BNP QHF GJSTU TUV EPOUT E  
QBSUJJDQ QSBFDI JO 1BSBHV  
QSPH\$BN TVNNFS TUVEZ BC  
BMMPXT FEVDBUJPO NBKPS  
TUVEFOU WCBIBS BHHVBZ ` 8I  
4BNXBT BMTWFSUBS BHVBZBO  
EFMJDBDJFT NFFU XJUI HF  
BOE FYQMPSF UIF SVJOT

4 5 6 % : " # 3 0 " % \* / ( - 0 # " - 4 1 0 3 5 \* / % 6

'PS UIF TFDPOE ZFBS UIF 4QPSU .BOBH  
TUVEFOU B XFFL USJQ BDSPTT ,PSFB  
BOE FOUFSUBJONFOU FWFOUT WFOVFT  
JODMVEJOH %BFKFPO 8PSME \$VQ 4UBEJ  
#.8 %SJWJOH \$FOUFS 4FPVM 8PSME \$V  
\*OUFSOBUJPOBM \$JSDVJU )BOXIB &BHM  
6OJWFSTJUZ \$IVOHOBN /BUJPOBM 6OJW  
4UVEFOU MFBSOFE TPDJP DVMUVSBM E  
4FPVM 4LZ 5PXFS QMBDFT NVTFVNT  
;POF BOE QBSUJDJQBUJOH JO UIF CVEE  
TUVEFOU 5IJT TFNJOBS HJWFT TUVEF  
FYQMPSF BOE FYQBOE UIFJS LOPXMFEH

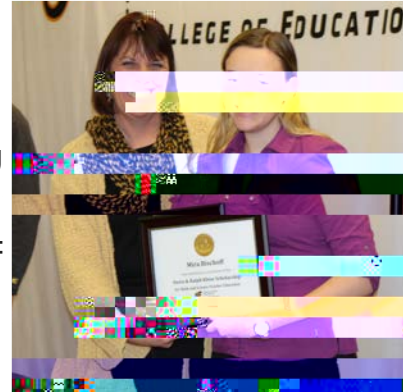




4 5 6 % & / 5 4 6 1 1 0 3 5

5IF \$4UVEFOU .FOUPSJOH 1SPHSBN DPPSE  
\$PNNJUUFF JT JO JUT UIQSEVZJFBST B50FBQS  
MBZFS PG TVQQ'P4S UUVZE KQBU\$ JXJUI PVUTUB  
TUBGG BOE HSBEVBUF NFOUPST

5IF %JWFSTJUZ \$PNNJUUFFOESBBOBDFE 3FU  
GBDVMUZ BOE TUBGG 5IF SFUSFBUTBGPD  
DIBOHTJWFHFOU EFNPHSBQIJD BOE JODMVEF  
QBOFMFOHBEJJOH BDUJWJUJFT



5IF \$PMMFHF PG "QQMJFE 4UVEJFT BOOVBMZ BXBSEFFNPSI  
CBTFEIPMBSTIJQT 5IFTF BXBSET BSF NBEF QPTTJCMF CZ P  
NPSF UIBO TUVEFOUT UIF PQQPSUVOJUZ UP DPOUJOVF U  
TDIPMBSTIJQT BXBSEFFNPSI 5IFTF BXBSET BSF NBEF QPTTJCMF CZ P  
8FXFSF BXBSEFFNPSI TUVEFOUT  
XJUI UIF %PSJT 3BMQI ,MPTF 4DIPMBSTIJQ  
5IF,MPTF 4DIPMBSTIJQ JT BXBSEFE UP TUVEFOUT  
NBKPSJNBHUUPS TDJFODF FEVDBUJPO



4UVEFOU TVDDFTT JT B DSJUJDBM HPBM  
5IJT HPBM JT TVQQPSUFE UISPVHI UIF 3  
QSPHSBNN3FUFOUJPOBDMMPXT MFBE  
P`ðP QSPHSBN  
3FU Ae8Ð 0`JPO

3 & 4 & " 3 \$ )' 6 / % \* / (



;  
\*/ (3"/5

%9FJZB03BWFOIP)ST4U #0MFS  
(SBEV3BUTFBSDI "TTJTUBOU "MFYVT  
\$PTTFMM BOU FTFO"LOFCEVBM  
"NFSJDBO 4QFFDI -BOHVBHF )FBSJOH  
"TTPDJ\$POWFOUJPO

( 3 " / 5 4

/"5\*0/"- '&%&3"5\*0/ 0' )\*( ) 4\$)00- "440\$\*"5\*0/4

%S 3JDI #PNHBSEOF S )14

)JHI TDIPPM GBDVMUZ BXBBSFOFTT PG QPTU DPODVTTJPO 3FUV  
-FBSO QPMJDJFT

6/%&3(3"%65& 3&4&"3\$) \$3&"5\*7& "\$5\*7\*5: (3"/5

%S +BTPO BOE\$N&FOUFF 4IVBOH -JBOH 6OEFSTUBOEJOH UIF  
DVSSFOU DPOUFYU PG DBSFFS EFDJTJPO NBLJOH EJGGJDVMUJ  
JOUFSOBUJPOBM TUVEFOUT

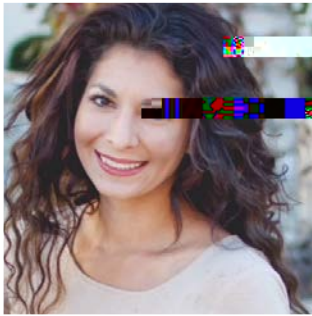
%S )FJEJ 3BWFOIPSTU #FMM )14 BOE TUVEFOU -VDZ \$PPL  
&GGFDUJWFOFTT PG BOUJ TMJQ QBUDI UP BTTFTT MJOHVBM QP

,"/4"4 #0"3% 0' 3&(&/54 5&"\$)&3 &%6\$"5\*0/ \$0.1&5\*5\*7&  
(3"/5

/"5\*0/"- 4\$\*&/\$& '06/%"5\*0/

( 3 " % 6 " 548) 0 8 \$ " 4 &

5IF \$PMMFHF PG "QQMJFE 4UVEJFT (SBEVBUF 3FTFBSDI 4IP  
IPTUFE JO UIF 3IBUJHBO 4UVEFOU \$FOUFS PO 4BUVSEBZ "QSJ  
DBOEJEBUFTUQFSJSTBOUBEO SFTFBSDI EPDUPSBM EJTTFSUBUJPO  
TUVEJFT BOE NBTUFS T UIFTFT UISPVHI PSBM QSFTFOUBUJPO  
QSPKFDUT



3@97>3  
477>7Df B: 6

3ee[efS' f BcaXWlead  
\$PVOTFMJOH &E  
-FBEFSTIJQ &E  
PM 1TZDIPMPHZ



D;5=;  
7>>;EA@

\$MJOJDBM &EVDBUP \$MJOJDBM &E  
"DBEFNJD "EWJTPS \$PVOTFMJOH  
4QPSU .BOBHFNFOU -FBEFSTIJQ  
4DIPPM 1TZDIPMPHZ

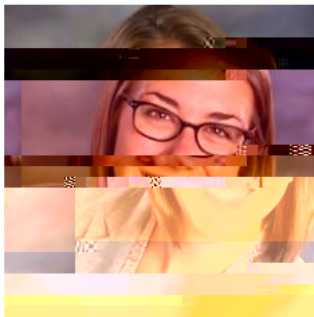


673@@3  
9AA5 fB: 6



B: ;>>;B  
? G>>;@E f B: 6

"TTJTUBOU 1SPGFTTTPSJTUBOU 1SPGFTTTPSSB EVBUF 5FB  
\$PVOTFMJOH &E \$PVOTFMJOH &E "TTJTUBOU  
-FBEFSTIJQ &E -FBEFSTIJQ &E &TQPSUT  
4DIPPM 1TZDIPMPHZ 4DIPPM 1TZDIPMPHZ



5>3G6;3  
I 77E7f B: 6



FK>7D  
>7H7ECG7



>;@6E3K  
>G;@EFD3

\$MJOJDBM &EVDBUP \$MJOJDBM &EVDBUP \$DBEFNJD "EW  
)VNB10fSGPSNBODF 4DIPPM PG &EVDBUJP \$ "4"EWJTJOH  
4UVEJFT

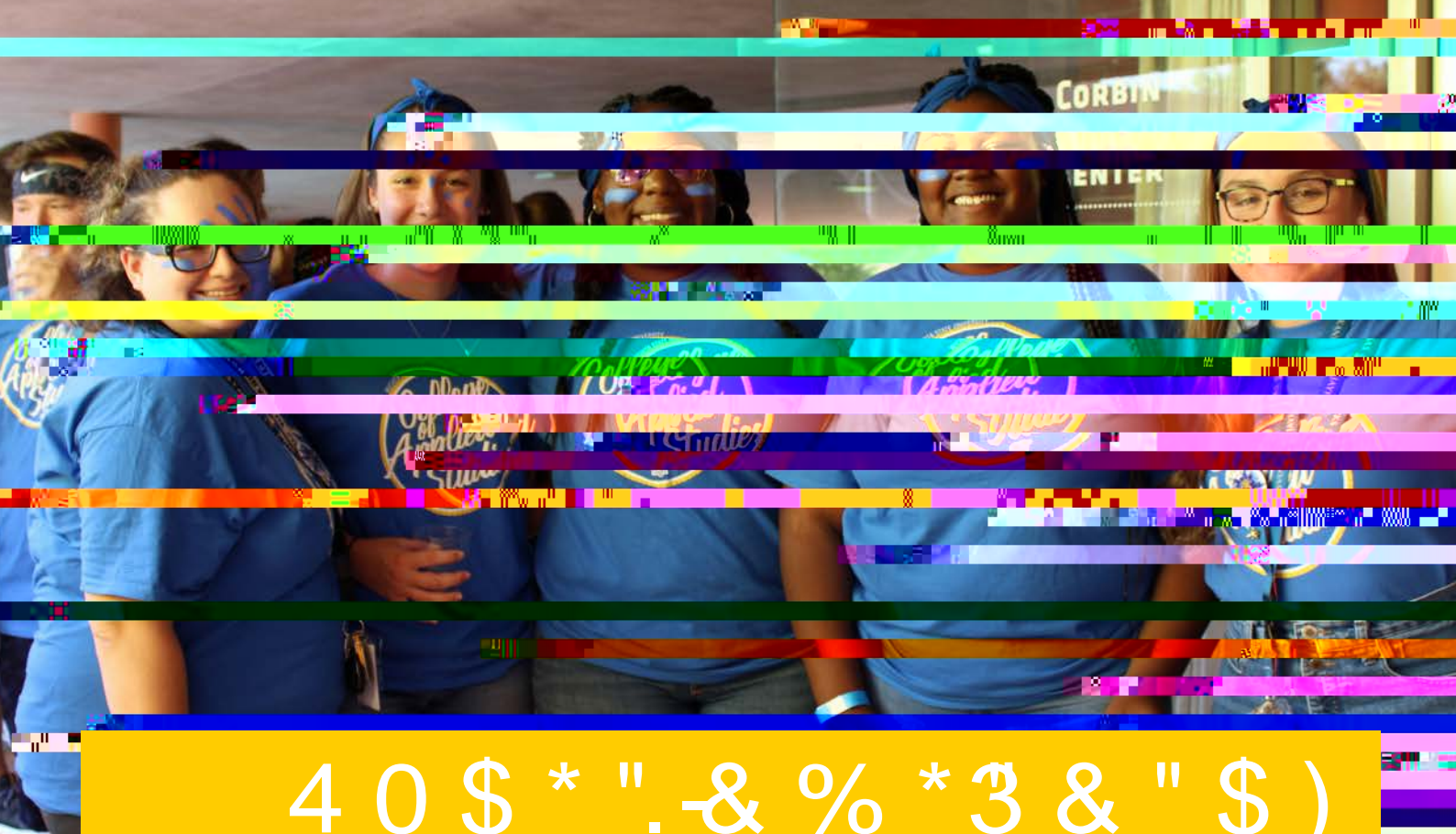


=3F: K  
? G@EF7D? 3@



\$ 0 - - & ( & " % 7 \* 4 0 3 : # 0 " 3 %

3 "\$ ) & - " - - & / 30 / ) 0 - 5  
0XOFS .BUIOBTJVN \$PNNVOJUZ -FBEFS  
." (/64 "44"3440/ +": )6--  
%JSFDUPS PG %FWFMPQ M FOU 4BMFT 8PSLQMBDF  
846 'PVOEBUJPO  
"4) - \* & + "\$ ,  
& % # & 3 ( & 3 "TTPDJBUF 1SPGFTTTPS  
, BOTBT 4UBUF 4FOBUPS \$PMMFHF PG "QQMJFE 4U  
'PSNFS \$PMMFHF 1SFTJEFOU  
)VUDIJOTPO \$PNNVOJUZ +": , && / & 3  
\$PMMFHF 'JOBODJBM "EWJTPS  
% " / \* & - # & 3 ( . " / 4) \* 3 - & : - & ' & 7 & 3  
"TTPDJBUF 1SPGFTTTPS %FBO \$PMMFHF PG "QQM  
\*OUFSJN %FQU )FBE  
4DIPPM PG &EVDBUJPO + " / & . \$ ) 6 ( )  
\$PNNVOJUZ -FBEFS  
#0 // \* & # \* / ( +PVSOBMJTU \$PNNVOJUZ 46 ; " / & 1 & 5 & 3 40 /  
'PSNFS &EVDBUPS \$PNNVOJUZ -FBEFS  
3 \* \$ ) # 0 . ( " 3 % / & 3 \$ 0 // \* & 4 \* . \$ 0 9  
"TTPDJBUF 1%PGFTTTPS \$PNNVOJUZ -FBEFS  
)VNBO 1FSGPSNBODF 4UVEJFT  
45 "\$ \* & \$ - " 3 , 40 / \$ - " : 450 - % 5  
"TTPD &YFD %JSFDUPS 1SPGFTTTPS "TTPDJBUF  
4 & , 4 &EVDBUJPO 4FSWJDF \$FOUFS \$PMMFHF PG "QQMJFE 4U  
\$ ) 3 \* 45 \* / & % 0 8 / & : 4 \$ ) . \* % 5 3) 0 / % " 5 6 3 / & 3  
'PSNFS &EVDBUPS 4UBUF BSSJBHF 'BNJMZ 5IFSB  
, 4 #PBSE PG 3FHFOUT . " 3 , 7 & 3 . \* - - \* 0 /  
# & \$ , : & / % \* \$ 0 5 5 1SPGFTTTPS %FQU \$IBJ  
4FOJTPSPDJBUF "UIMFUJDT 4QPSU BOBHFNFOU  
846 %JSFDUPS  
- \* / % " 8 & \* 3 & / & ( 3 & /  
1SFTJEFOU - 4 \* OEV TUS J  
+ 0 % : ' \* 0 3 \* / \* "TTPDJBUF 1SPGFTTTPS  
\$ - & 4 1 " 5 3 \* \$ \* " 8 ) \* 5 / & :  
'PSNFS &EVDBUPS



4 0 \$ \* " . - & % \* 3 & " \$ )

0 7 & 3

' 0 - - 0 8 & 3 4