

DEFINITION

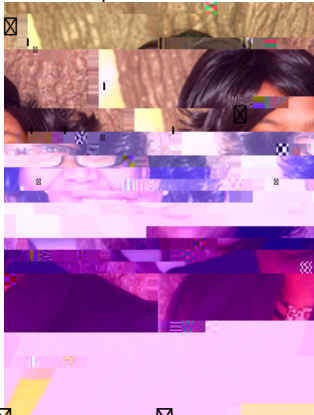
Service-Learning (S-L) at Wichita State University is an experiential learning method that integrates community

0



OUR TEAM

SERVICE LEARNING FACULTY FELLOWS

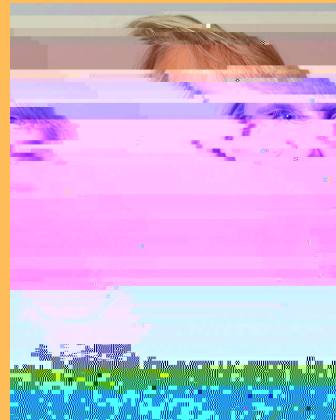


RACHEL KLUMP
PH.D. M.P.H.
ASSISTANT PROFESSOR
ORGANIZATIONAL LEADERSHIP
LEARNING COLLEGE OF APPLIED STUDIES



CHELSEA REDGER
M.A. ED.D.
ASSISTANT DEAN
HONORS COLLEGE
ASSISTANT PROFESSOR
ORGANIZATIONAL LEADERSHIP
LEARNING COLLEGE OF APPLIED STUDIES

SERVICE LEARNING SCHOLARS



Dosun Ko

The Service-Learning Showcase is a unique opportunity for students who participate in service

