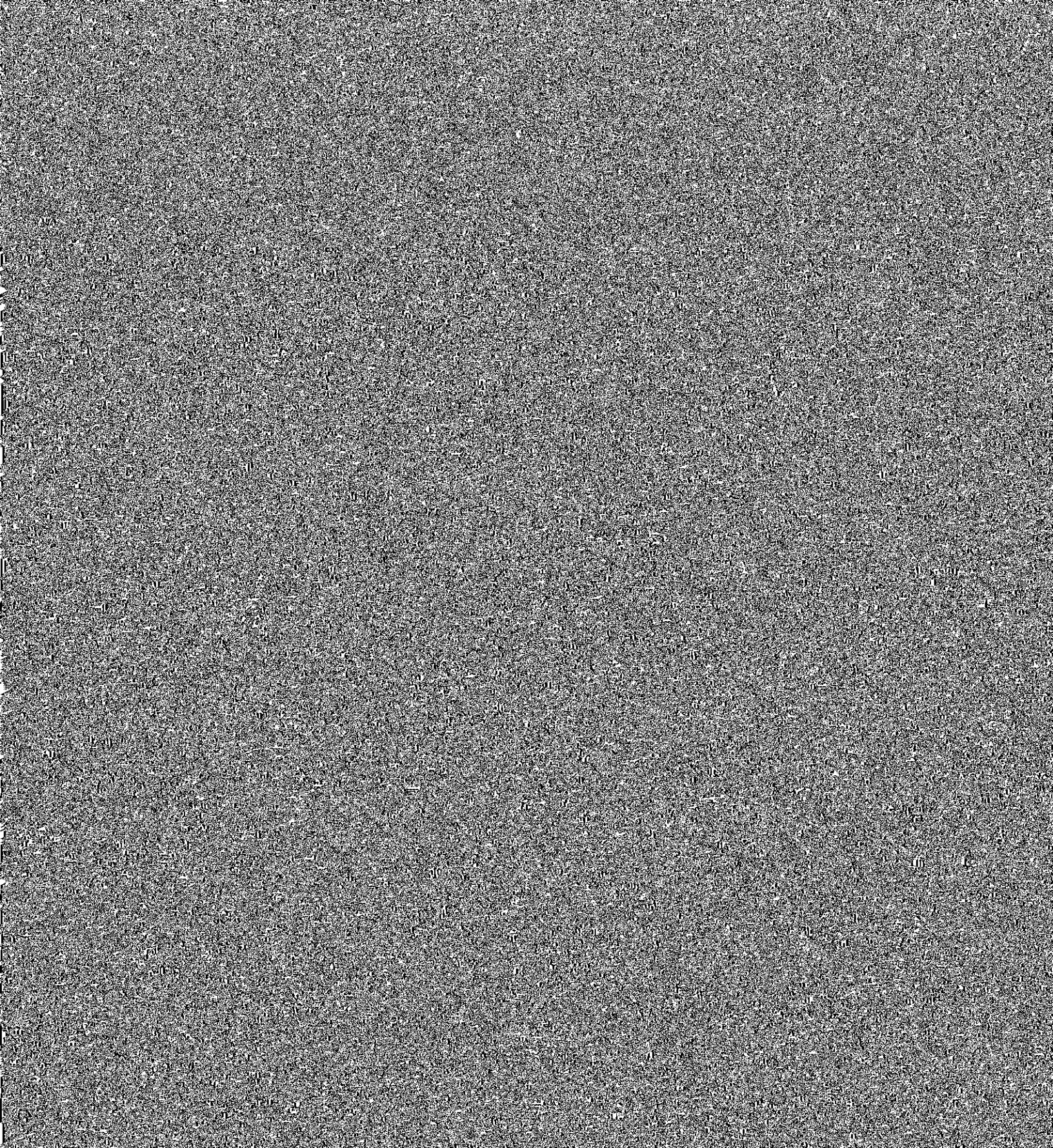


**Wichita State University Foundation
Pooled Investment Performance
as of February 29, 2020**

**FY2020
Performance**

Composite

-0.8% NOTE: The returns are as of February 29, 2020, and include estimated returns for the Private Investments.



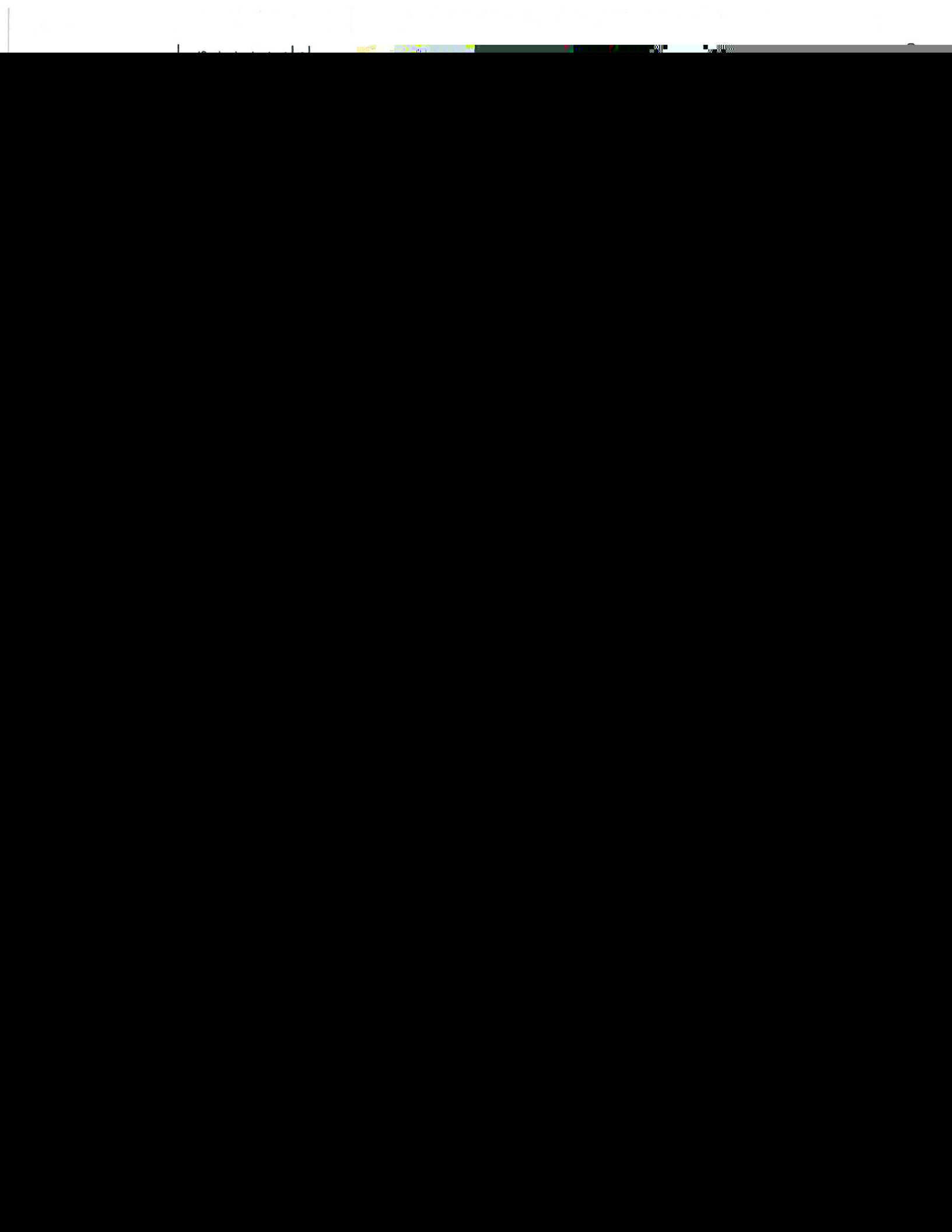
Wichita State University Board of Trustees
City of Wichita/Sedgewick County Mill Levy Budget

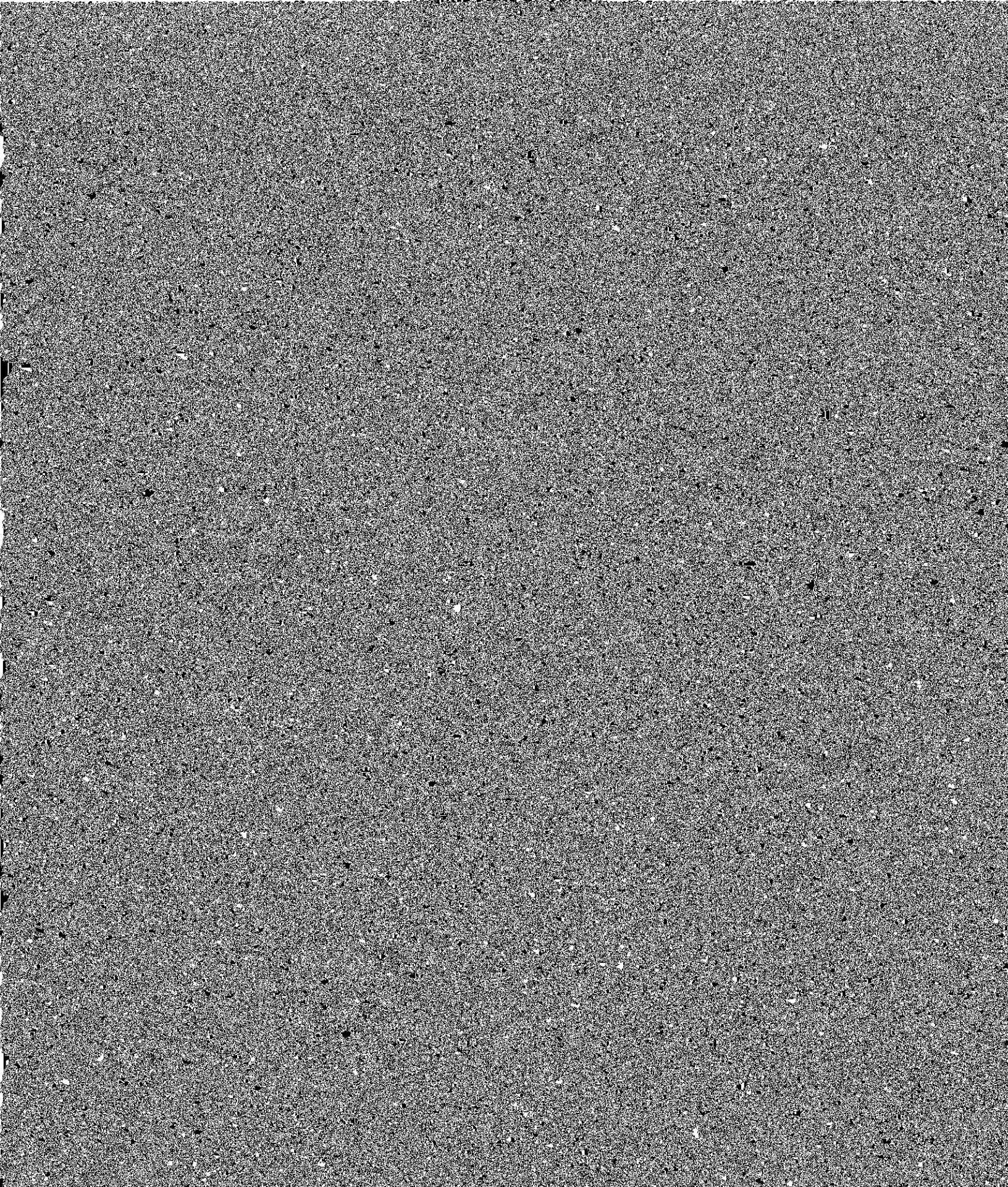


**Wichita State University
Campus Development Fund
Fiscal Year 2021 Budget**

<u>Revenues</u>	<u>Fiscal Year 2021 Budget</u>	<u>Fiscal Year 2020 Budget</u>	<u>Increase (Decrease)</u>
University EEG for WSIA	\$ 2,340,352	\$ 2,092,730	\$ 247,622

2.5
2.2





Wichita State University Board of Trustees
University Research and Support Services Detail
Fiscal Year 2021 Budget

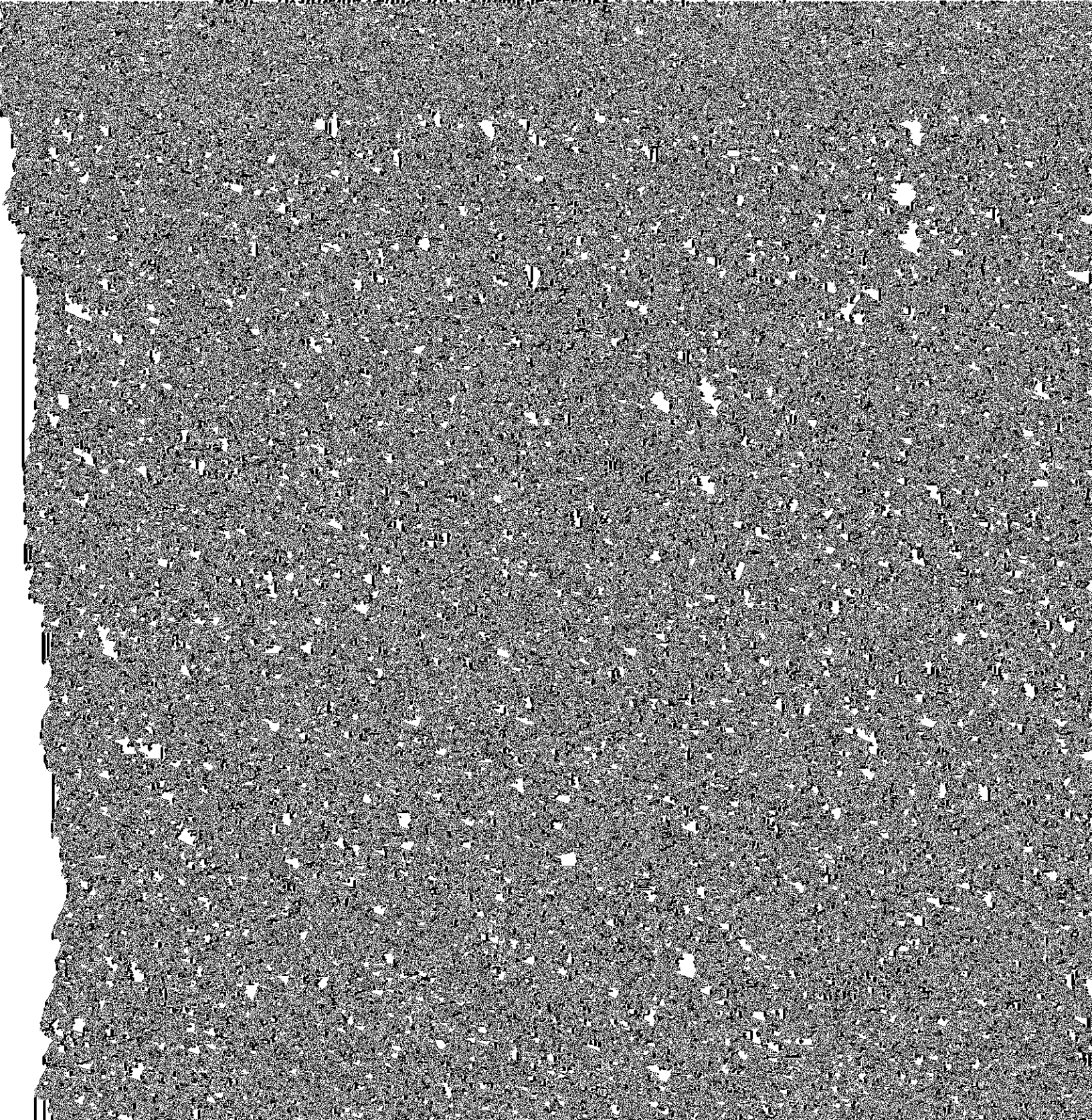
<u>Expenditures</u>	<u>Fiscal Year 2021 Budget</u>	<u>Fiscal Year 2020 Budget</u>	<u>Increase (Decrease)</u>
<u>General and Administrative</u>			
Maintenance and Repairs	\$ 15,000	\$ 15,000	\$ -
Professional Fees	17,000	17,000	-
Insurance	12,000	8,800	3,200
Bank Fees	5,000	-	5,000
Other	8,000	450	7,550
Transfer to Cash Flow Reserve	-	15,750	(15,750)
Total Expenditures	\$ 57,000	\$ 57,000	\$ -

FISCAL YEAR 2021
WICHITA STATE UNIVERSITY
CITY-COUNTY MILL LEVY BUDGET REQUEST

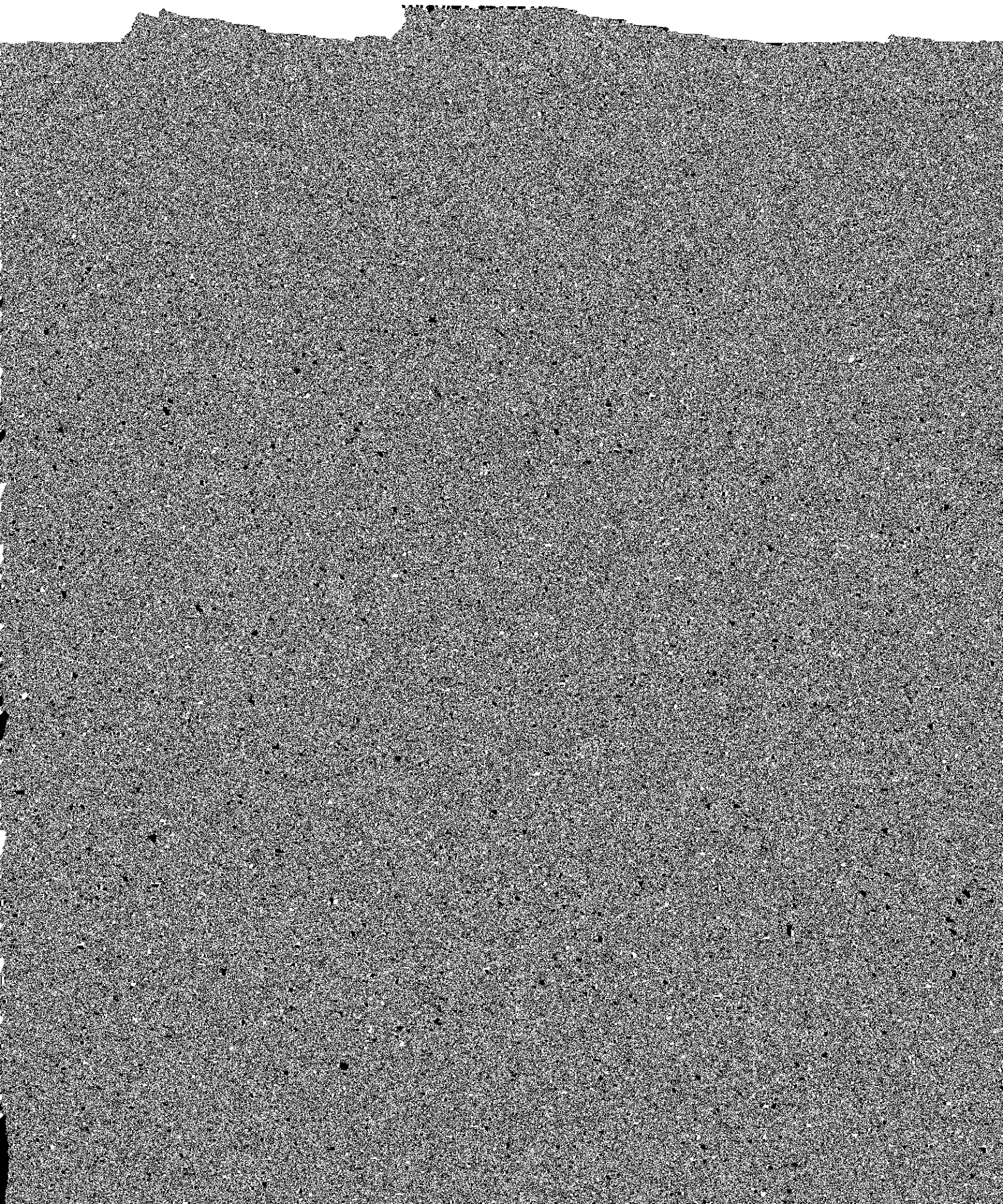
Capital Improvements \$2,939,114

WSU Innovation Campus \$2,918,718

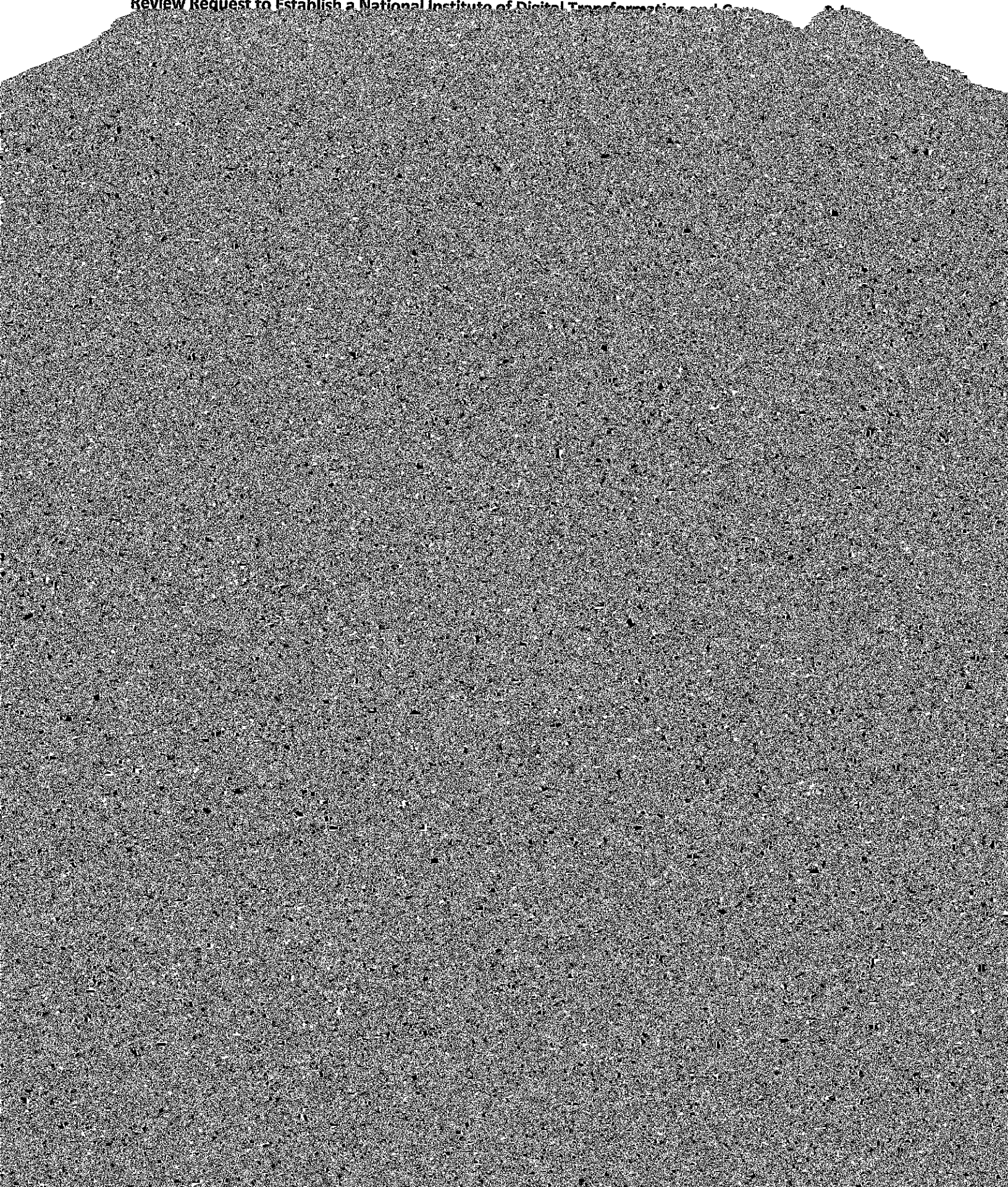
Goal: To provide capital for strategic initiatives and debt



FISCAL YEAR 2021



Review Request to Establish a National Institute of Digital Transformation and Governance



each year and we will be able to change for